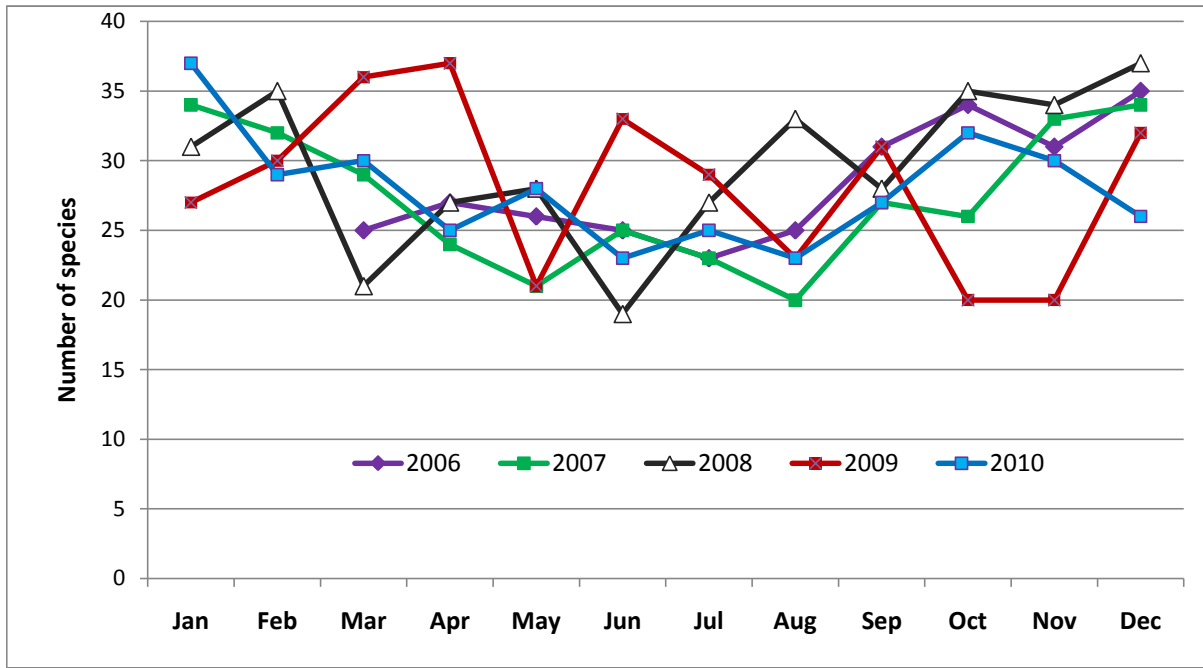


HFNC

HAMILTON GRANGE WETLAND MONTHLY BIRD SURVEY

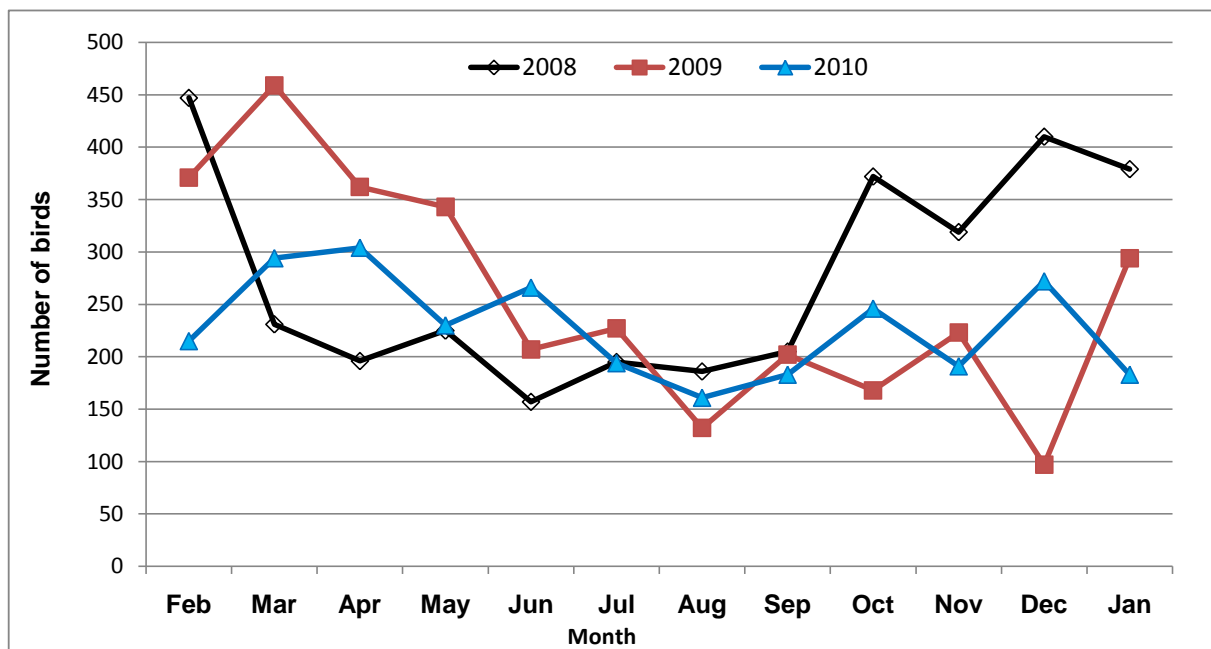
Number of species at each count

Year	Jan	Feb	Mar	Apr	May	Jun	Jul	Aug	Sep	Oct	Nov	Dec
2006			25	27	26	25	23	25	31	34	31	35
2007	34	32	29	24	21	25	23	20	27	26	33	34
2008	31	35	21	27	28	19	27	33	28	35	34	37
2009	27	30	36	37	21	33	29	23	31	20	20	32
2010	37	29	30	25	28	23	25	23	27	32	30	26



Total number of birds seen at each month for 3 years (Feb08-Jan11)

Series	Year	Feb	Mar	Apr	May	Jun	Jul	Aug	Sep	Oct	Nov	Dec	Jan
1	2008	447	231	196	225	157	195	186	205	372	319	410	379
2	2009	371	459	362	343	207	227	132	202	168	223	97	294
3	2010	215	294	304	230	266	194	161	183	246	191	272	183



Number of birds of all species in 3 categories seen at each month for 3 years (Feb08-Jan11)

Year	Group	Feb	Mar	Apr	May	Jun	Jul	Aug	Sep	Oct	Nov	Dec	Jan
08	wbird	236	205	144	162	124	108	100	113	174	193	218	336
09	wbird	237	308	251	317	133	101	71	74	60	115	57	160
10	wbird	145	186	206	128	140	96	79	60	65	46	93	71
08	bop	3	0	1	2	0	1	3	2	2	0	2	3
09	bop	1	1	0	0	1	1	0	2	0	1	0	1
10	bop	4	1	0	0	0	1	1	1	0	1	1	1
08	other	210	26	51	63	33	82	84	90	197	122	190	43
09	other	133	146	106	26	72	126	61	125	106	106	40	132
10	other	70	107	92	102	114	98	82	123	176	142	179	103

wbird = waterbird (as in graph below)
 bop = bird of prey (too few to bother graphing separately)
 others = bop and other non waterbirds (as in graph below)

