

HFNC Excursion to Redman area of Gariwerd/Grampians National Park on 22 November 2025

Rod Bird & Diane Luhrs

Participants: D Luhrs, R Bird, V Keiller, J Logan, Y Ingeme & R Zollinger

We left Hamilton at 9.0 am, travelled through Dunkeld to the Halls Gap Rd and made our first stop at a roadside quarry 20 km along that road. There we found some Blotched Sun-orchids *Thelymitra benthamiana* and Great Sun-orchids *T. aristata* but most of the sun-orchids were only partly open. The Copper Beard-orchid *Calochilus campestris*, Red Beard-orchid *Calochilus paludosis* and Bronze Caladenia *Caladenia iridescens* were in full flower but the Red-beaks *Pyrorchis nigricans*, Tall Leek-orchid *Prasophyllum elatum* and Sweet Leek-orchid *P. odoratum* flowers had all waned.



The 20 km stop off Halls Gap Rd ^{DL}



Copper Beard-orchid ^{DL}



Red Beard-orchid ^{DL}



Bronze Caladenia ^{RB}

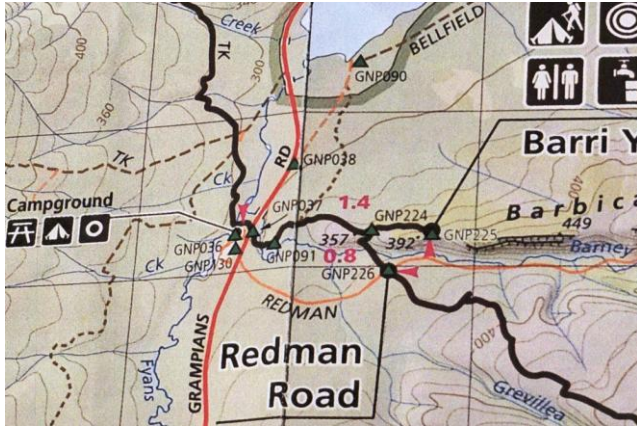


Great Sun-orchid ^{RB}

The *Sparaxis bulbifera* weed plants seen flowering in the roadside gutter 4 weeks earlier (and reported to PV) had disappeared. They were probably pulled up, as there was no evidence of digging or spray.

In the wet gutter area were Fairies Aprons *Utricularia uniflora*, Onion orchids *Microtis* sp. and Common Fringe-lily *Thysanotus tuberosus*. Short Purple-flag *Patersonia fragilis* were found on an old forestry track 150 m east of the main road.

Our lunch stop was at Borough Huts campground. The road up to Mt William was still closed due to fire damage, so we were unable to take that drive, always a delight in late Spring-early summer.



From the Borough Huts camp we walked on the Grampians Peak Trail (GPT), from the bridge over Fyans Creek to the intersection with Redman Rd, where we walked back along the road to our vehicles. The entire walk was about 5 km, with one tricky crossing (for some) of Barneys Ck on large wide-spaced stepping stones and another crossing over a bridge.

The trail was of a moderate grade with only one peak and fairly steep descent on stone steps. Redman Rd was closed to traffic, so we could not employ a vehicle shuffle to avoid the walk back along the road to the camp.

Starting from the Fyans Creek bridge at Borough Huts, the first damp low-lying section had many white daisy flowers (*Brachyscome* sp.?), Milk Maids *Burchardia umbellata* and then Austral Pelargoniums *Pelargonium australe* were showing their delicate pink-streaked white flowers.



Fyans Creek from the footbridge



Eastern Mantis Orchid^{RB}

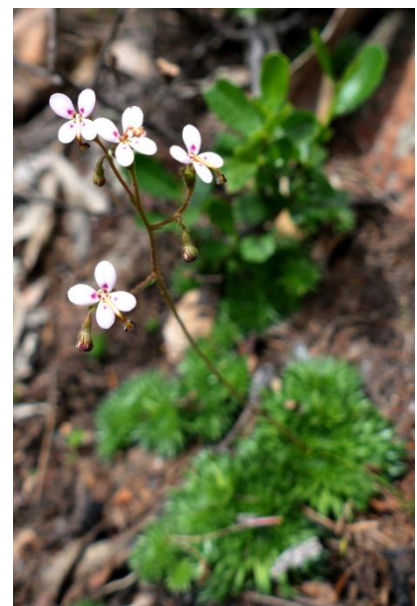
We soon found our first orchids, with Bronze Caladenia *Caladenia iridescens*, Blotched Sun-orchid *T. benthamiana* and Short-lipped Leek-orchid *Prasophyllum brevilabre* appearing in numbers. There were also a few Eastern Mantis Orchid *Caladenia tentaculata*, Dotted Sun-orchids *Thelymitra ixioides*, Pale-fruited Sun-orchid *T. paludifruta* and Slender Sun-orchid *T. pauciflora* in bloom.



Blotched Sun-orchid^{RB}



Tall Lobelia^{RB}



Grampians Trigger-plant^{RB}



Short-lipped Leek-orchid ^{RB}



Thelymitra sp. ^{DL}



Bronze Caladenia ^{DL}



Lomandra (*multiflora*?) ^{DL}



Chocolate Lily ^{RB}



White Everlasting ^{RB}



Wattle Matrush ^{RB}

There were many other plants in flower; thousands of yellow-flowered Button Everlasting *Coronidium scorpioides*, Common Billy-buttons *Craspedia variabilis*, Bent Goodenia *Goodenia geniculata* and Common Everlasting *Chrysocephalum apiculatum*. Chocolate Lily *Arthropodium strictum* provided a dash of purple, along with the blue of Tall Lobelia *Lobelia gibbosa* and several species of bluebell.



Sprawling Bluebell ^{RB}



Tall Lobelia ^{RB}

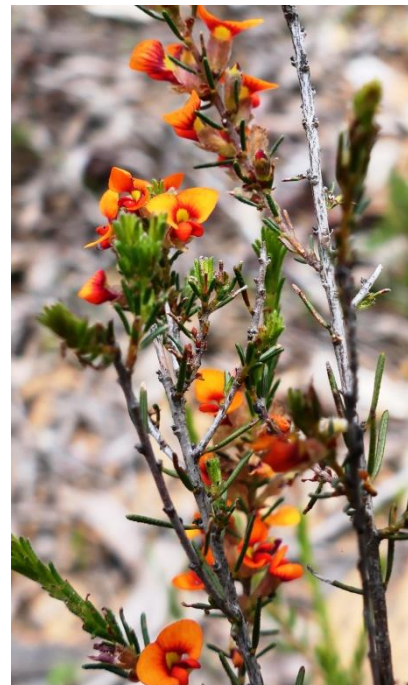
A missing component in the vegetation were flowering shrubs, as a consequence of the fire last summer. For example, there were no acacias, banksias or heath shrubs with (or without) flowers. One bush of Heath Myrtle *Micromyrtis ciliata* was seen on the rocky peak and a few bushes of Variable Prickly Grevillea *Grevillea aquifolium* at another place. A few small bush-peas (Red Parrot-pea *Dillwynia hispida* and Showy Parrot-pea *D. sericea*) were also found in flower.



Blotched Sun-orchid ^{RB}

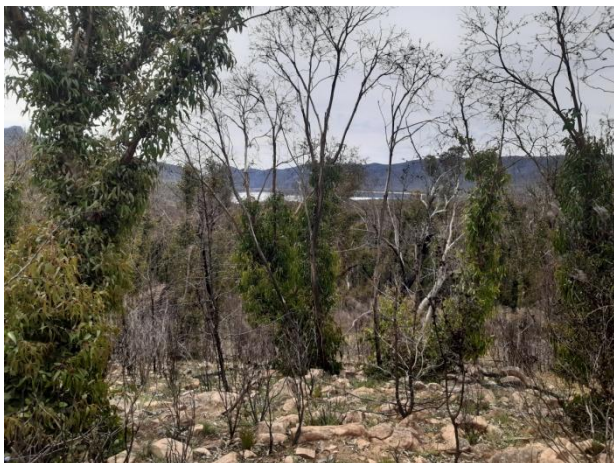


King Ferns on Barney Ck ^{RB}



Showy Parrot-pea ^{RB}

King Fern *Todea barbara* grew luxuriantly on the banks of the rocky streams that we crossed.



View from the stony peak to Lake Bellfield ^{DL}

What was noticed when travelling through the Grampians today was a substantial increase in the number of new seedlings throughout the burned areas (and decrease in bare ground) since our excursion along the Henham Track in early October.

Our reasonably good spring rains have been a blessing.

Back at Borough Huts we enjoyed afternoon tea before the drive back to Hamilton. We had good weather for the outing, as we had done for all of our outdoor activities this year.

We made a short stop on the Yarram Gap Rd, at the crossing of the GPT, where we looked for orchids on the northern side of the road. Earlier, this had many Bearded Greenhoods *Pterostylis extensa* in flower and a couple in very late stages were still visible. A few Eastern Mantis Orchids were still in full flower, as were Blotched Sun-orchids.

A final stop was made by two of us at the Piccaninny parking area, where we saw dozens of Large Duck-orchids *Caleana major* on the first 100 m of the trail. One Dusky Fingers *Caladenia fuscata* was also seen, along with several Pink Fingers *Caladenia carnea*, an unknown small Sun-orchid *Thelymitra* sp., Black-anther Flax-lily *Dianella revoluta* and Dwarf Wedge-pea *Gompholobium ecostatum*. This area was not burned in the fire of last summer.



Thelymitra sp. ^{DL}



Dusky Fingers/*Caladenia* ^{DL}



Dwarf Wedge-pea ^{RB}

We finished a most enjoyable day at about 4 pm.

A list of most plants that we observed in flower is given below. Some of the smaller species, including some daisies and sundews, were not identified and are not in this list.



Large Duck-orchid ^{DL}

List of some plants in flower in Grampians/Gariwerd National Park on 22 Nov. 2025

- *Arthropodium strictum* Chocolate Lily
- *Austrostipa* sp. Spear grass
- *Brachyscome (decipiens?)* a white daisy
- *Brachyscome (spathulata?)* a purple daisy
- *Brunonia australis* Blue Pincushions
- *Burchardia umbellata* Milk Maids
- *Caladenia carnea* Pink Fingers
- *Caladenia fuscata* Dusky Caladenia
- *Caladenia iridescens* Bronze Caladenia
- *Caladenia tentaculata* Eastern Mantis Orchid
- *Caleana major* Large Duck-orchid
- *Calochilus campestris* Copper Beard-orchid
- *Calochilus paludosis* Red Beard-orchid
- *Chrysocephalum apiculatum* Common Everlasting
- *Chrysocephalum baxteri* White Everlasting
- *Coronidium scorpioides* Button Everlasting
- *Craspedia variabilis* Common Billy-buttons
- *Dianella revoluta* Black-anther Flax-lily
- *Dichelachne crinita* Long-hair Plume-grass
- *Dillwynia hispida* Red Parrot-pea
- *Dillwynia sericea* Showy Parrot-pea
- *Drosera macrantha* Climbing Sundew
- *Gompholobium ecostatum* Dwarf Wedge-pea
- *Goodenia geniculata* Bent Goodenia
- *Grevillea aquifolium* Variable Prickly Grevillea
- *Lobelia gibbosa* Tall Lobelia
- *Lomandra filiformis* Wattle Mat-rush
- *Lomandra* sp. Mat-rush
- *Micromyrtis ciliata* Heath Myrtle
- *Oxalis perennans* Grassland Wood-sorrel
- *Patersonia fragilis* Short Purple-flag
- *Pelargonium australe* Austral Pelargonium
- *Pimelia humilis* Common Rice-flower
- *Platylobium obtusangulum* Common Flat-pea
- *Podolepis jaceoides* Showy Podolepis
- *Prasophyllum brevilabre* Short-lipped Leek-orchid
- *Prasophyllum elatum* Tall Leek-orchid
- *Prasophyllum odoratum* Sweet Leek-orchid
- *Pterostylis extensa* Bearded Greenhood
- *Pyrorchis nigricans* Red-beaks
- *Rhytidosperma* sp. Wallaby Grass
- *Stackhousia viminea* Slender Candles
- *Stylidium graminifolium* Grass Trigger-plant
- *Stylidium soboliferum* Grampians Trigger-plant
- *Thelymitra aristata* Great Sun-orchid
- *Thelymitra benthamiana* Blotched Sun-orchid
- *Thelymitra ixioides* Dotted Sun-orchid
- *Thelymitra paludifruca* Pale-fruited Sun-orchid
- *Thelymitra pauciflora* Slender Sun-orchid
- *Thelymitra* sp. not identified
- *Thysanotus tuberosus* Common Fringe-lily
- *Utricularia uniflora* Fairies Aprons
- *Viola hederacea* Ivy-leaved Violet
- *Wahlenbergia gracilentata* Annual Bluebell
- *Wahlenbergia gracilis* Sprawling Bluebell
- *Xanthorrhoea australis* Austral Grass-tree